

Flexible Spaces



The interior spaces are designed with flexibility in mind. Life is simple when a 1-bedroom unit can be used for working from home in the day and as a space to entertain guests in the evening.

1-BEDROOM

Type A1

38 sq m | 409 sq ft  
INCLUSIVE OF 3 SQM AC LEDGE

Tower 16  
UNIT  
#03-01 TO #29-01

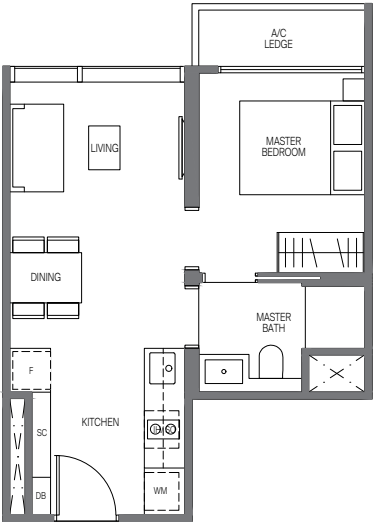
Tower 18  
UNIT  
#03-11 TO #29-11  
#03-13 TO #29-13

Type A1-R

38 sq m | 409 sq ft  
INCLUSIVE OF 3 SQM AC LEDGE

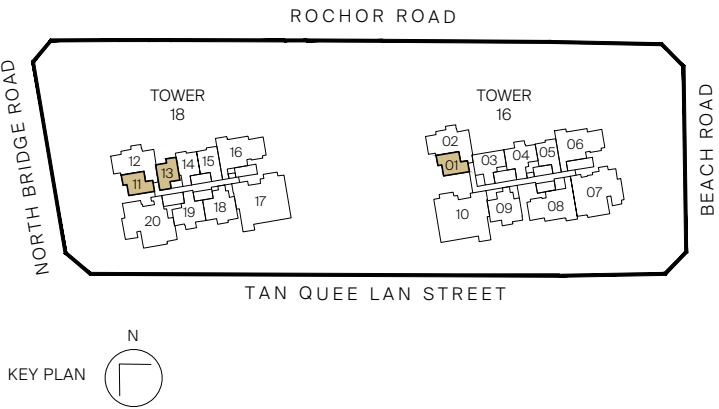
Tower 16  
UNIT  
#30-01

Tower 18  
UNIT  
#30-11  
#30-13



Legend (where applicable)

- |                               |                                |
|-------------------------------|--------------------------------|
| <b>F</b> - Fridge             | <b>WCH</b> - Wine Chiller      |
| <b>IH</b> - Induction Hob     | <b>W</b> - Washer              |
| <b>GH</b> - Gas Hob           | <b>D</b> - Dryer               |
| <b>WM</b> - Washer cum Dryer  | <b>DB</b> - Distribution Board |
| <b>SO</b> - Combi Steam Oven  | <b>SC</b> - Shoe Cabinet       |
| <b>CO</b> - Convectional Oven |                                |



All plans are subjected to amendments as may be approved by the relevant authorities. Floor areas are approximate measurements and are subjected to final survey.

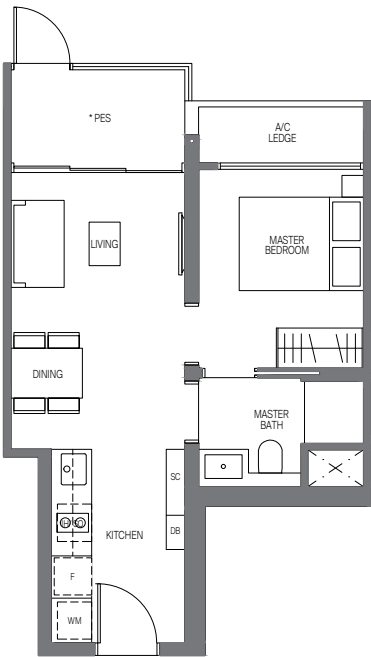
1-BEDROOM

Type A2-G

44 sq m | 474 sq ft

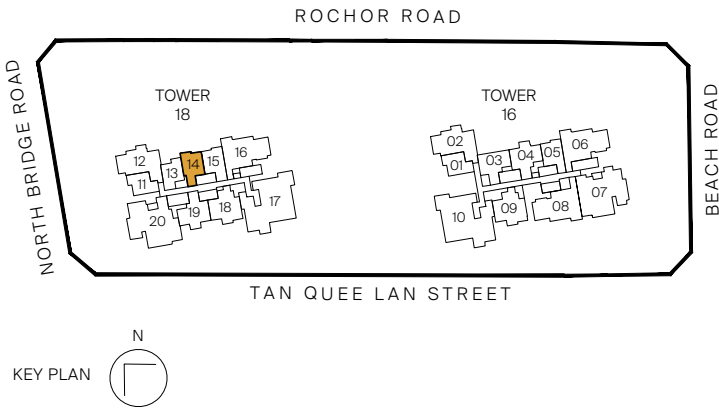
INCLUSIVE OF 5 SQM PES & 3 SQM AC LEDGE

Tower 18  
UNIT  
#03-14



Legend (where applicable)

- |                               |                                |
|-------------------------------|--------------------------------|
| <b>F</b> - Fridge             | <b>WCH</b> - Wine Chiller      |
| <b>IH</b> - Induction Hob     | <b>W</b> - Washer              |
| <b>GH</b> - Gas Hob           | <b>D</b> - Dryer               |
| <b>WM</b> - Washer cum Dryer  | <b>DB</b> - Distribution Board |
| <b>SO</b> - Combi Steam Oven  | <b>SC</b> - Shoe Cabinet       |
| <b>CO</b> - Convectional Oven |                                |



All plans are subjected to amendents as may be approved by the relevant authorities. Floor areas are approximate measurements and are subjected to final survey.  
\* Balconies/PES are not to be enclosed except with a balcony screen which has been approved and complies with the Competent Authority's guidelines.  
For an illustration of the approved balcony screen, please refer to this brochure

1-BEDROOM

Type A2

44 sq m | 474 sq ft

INCLUSIVE OF 5 SQM BALCONY & 3 SQM AC LEDGE

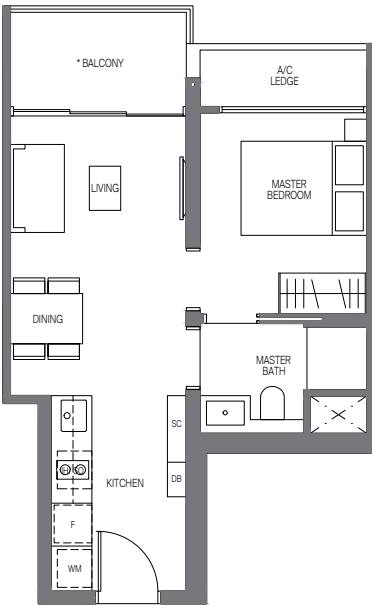
Tower 18  
UNIT  
#04-14 to #29-14

Type A2-R

44 sq m | 474 sq ft

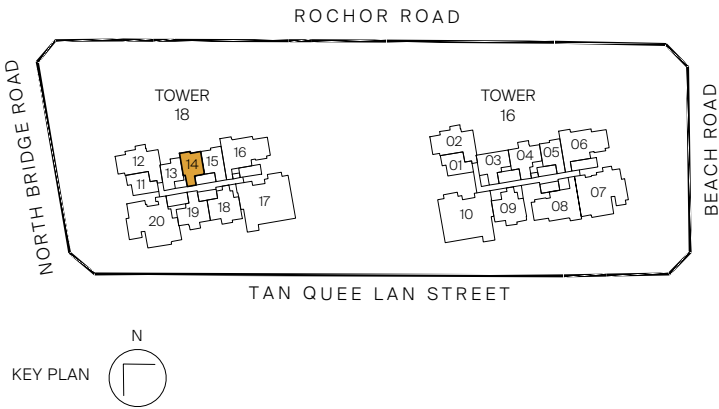
INCLUSIVE OF 5 SQM BALCONY & 3 SQM AC LEDGE

Tower 18  
UNIT  
#30-14



Legend (where applicable)

- |                               |                                |
|-------------------------------|--------------------------------|
| <b>F</b> - Fridge             | <b>WCH</b> - Wine Chiller      |
| <b>IH</b> - Induction Hob     | <b>W</b> - Washer              |
| <b>GH</b> - Gas Hob           | <b>D</b> - Dryer               |
| <b>WM</b> - Washer cum Dryer  | <b>DB</b> - Distribution Board |
| <b>SO</b> - Combi Steam Oven  | <b>SC</b> - Shoe Cabinet       |
| <b>CO</b> - Convectional Oven |                                |



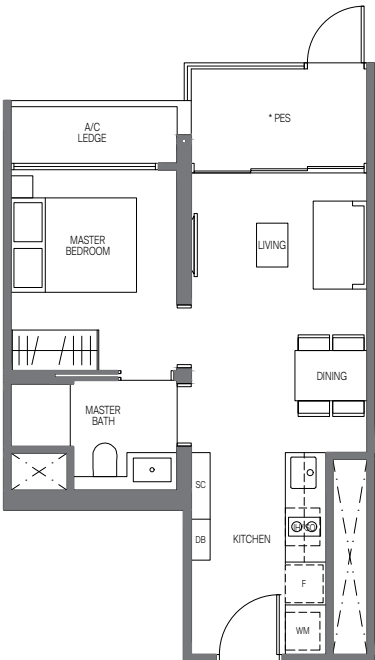
All plans are subjected to amendents as may be approved by the relevant authorities. Floor areas are approximate measurements and are subjected to final survey.  
\* Balconies/PES are not to be enclosed except with a balcony screen which has been approved and complies with the Competent Authority's guidelines.  
For an illustration of the approved balcony screen, please refer to this brochure

1-BEDROOM

Type A3-G

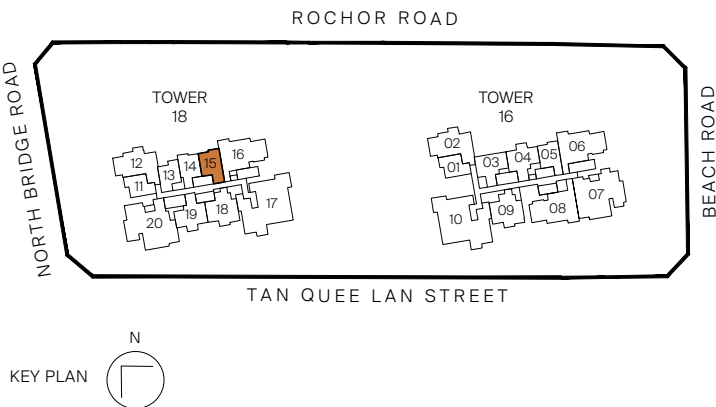
44 sq m | 474 sq ft  
INCLUSIVE OF 5 SQM PES & 3 SQM AC LEDGE

Tower 18  
UNIT  
#03-15



Legend (where applicable)

- |                               |                                |
|-------------------------------|--------------------------------|
| <b>F</b> - Fridge             | <b>WCH</b> - Wine Chiller      |
| <b>IH</b> - Induction Hob     | <b>W</b> - Washer              |
| <b>GH</b> - Gas Hob           | <b>D</b> - Dryer               |
| <b>WM</b> - Washer cum Dryer  | <b>DB</b> - Distribution Board |
| <b>SO</b> - Combi Steam Oven  | <b>SC</b> - Shoe Cabinet       |
| <b>CO</b> - Convectional Oven |                                |



All plans are subjected to amendents as may be approved by the relevant authorities. Floor areas are approximate measurements and are subjected to final survey.  
\* Balconies/PES are not to be enclosed except with a balcony screen which has been approved and complies with the Competent Authority's guidelines.  
For an illustration of the approved balcony screen, please refer to this brochure

1-BEDROOM

Type A3

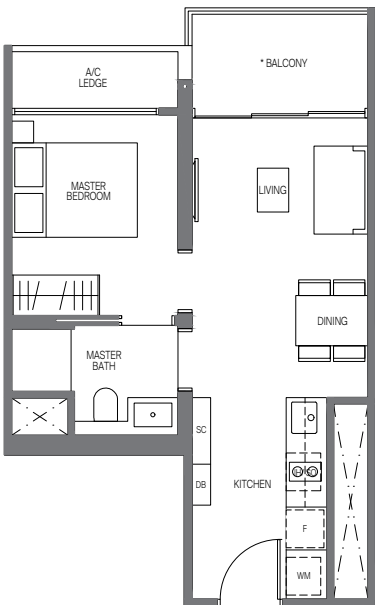
44 sq m | 474 sq ft  
INCLUSIVE OF 5 SQM BALCONY & 3 SQM AC LEDGE

Tower 18  
UNIT  
#04-15 to #29-15

Type A3-R

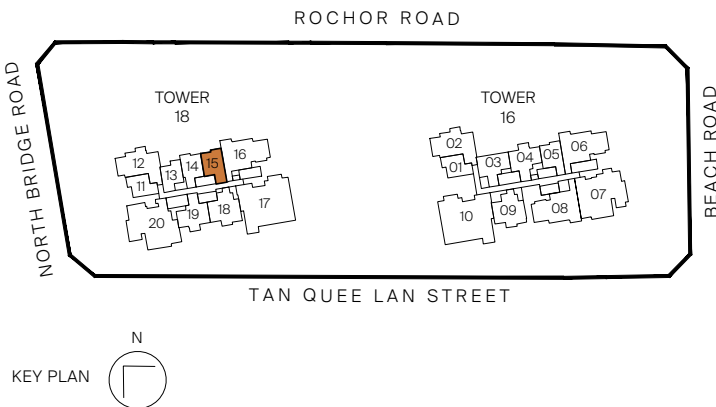
44 sq m | 474 sq ft  
INCLUSIVE OF 5 SQM BALCONY & 3 SQM AC LEDGE

Tower 18  
UNIT  
#30-15



Legend (where applicable)

- |                               |                                |
|-------------------------------|--------------------------------|
| <b>F</b> - Fridge             | <b>WCH</b> - Wine Chiller      |
| <b>IH</b> - Induction Hob     | <b>W</b> - Washer              |
| <b>GH</b> - Gas Hob           | <b>D</b> - Dryer               |
| <b>WM</b> - Washer cum Dryer  | <b>DB</b> - Distribution Board |
| <b>SO</b> - Combi Steam Oven  | <b>SC</b> - Shoe Cabinet       |
| <b>CO</b> - Convectional Oven |                                |



All plans are subjected to amendents as may be approved by the relevant authorities. Floor areas are approximate measurements and are subjected to final survey.  
\* Balconies/PES are not to be enclosed except with a balcony screen which has been approved and complies with the Competent Authority's guidelines.  
For an illustration of the approved balcony screen, please refer to this brochure

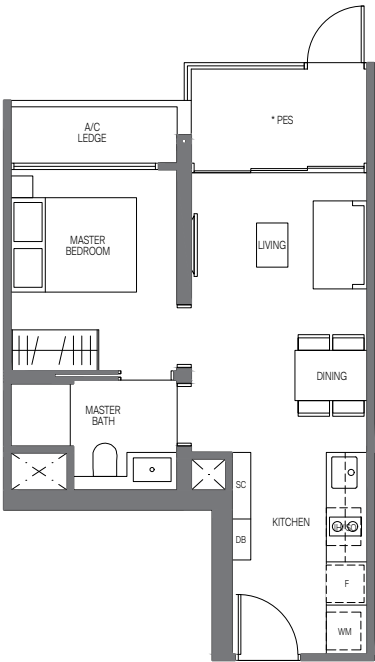
1-BEDROOM

Type A4-G

44 sq m | 474 sq ft

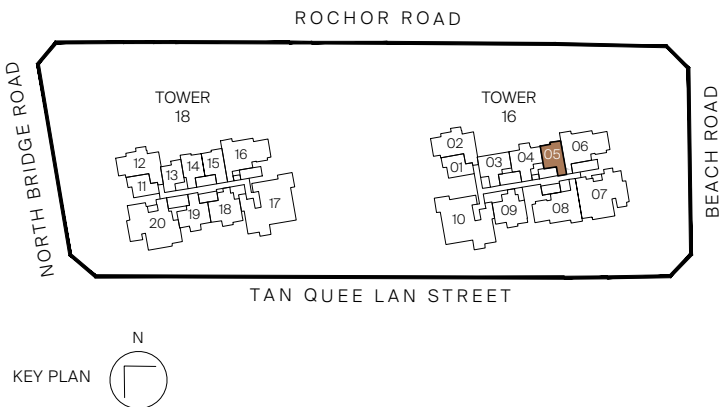
INCLUSIVE OF 5 SQM PES & 3 SQM AC LEDGE

Tower 16  
UNIT  
#03-05



Legend (where applicable)

- |                               |                                |
|-------------------------------|--------------------------------|
| <b>F</b> - Fridge             | <b>WCH</b> - Wine Chiller      |
| <b>IH</b> - Induction Hob     | <b>W</b> - Washer              |
| <b>GH</b> - Gas Hob           | <b>D</b> - Dryer               |
| <b>WM</b> - Washer cum Dryer  | <b>DB</b> - Distribution Board |
| <b>SO</b> - Combi Steam Oven  | <b>SC</b> - Shoe Cabinet       |
| <b>CO</b> - Convectional Oven |                                |



All plans are subjected to amendents as may be approved by the relevant authorities. Floor areas are approximate measurements and are subjected to final survey.  
\* Balconies/PES are not to be enclosed except with a balcony screen which has been approved and complies with the Competent Authority's guidelines.  
For an illustration of the approved balcony screen, please refer to this brochure

1-BEDROOM

Type A4

44 sq m | 474 sq ft

INCLUSIVE OF 5 SQM BALCONY & 3 SQM AC LEDGE

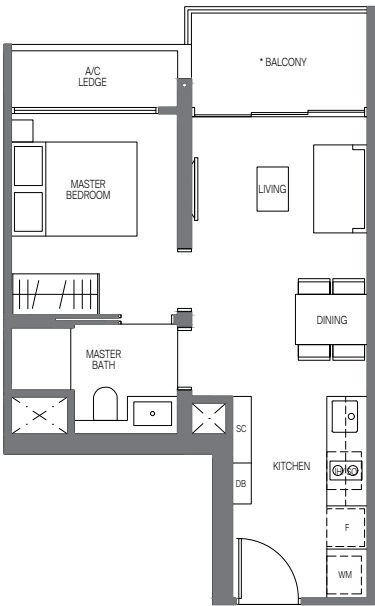
Tower 16  
UNIT  
#04-05 to #29-05

Type A4-R

44 sq m | 474 sq ft

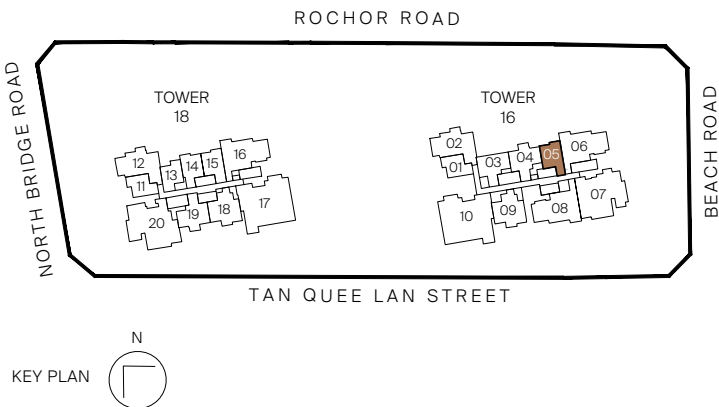
INCLUSIVE OF 5 SQM BALCONY & 3 SQM AC LEDGE

Tower 16  
UNIT  
#30-05



Legend (where applicable)

- |                               |                                |
|-------------------------------|--------------------------------|
| <b>F</b> - Fridge             | <b>WCH</b> - Wine Chiller      |
| <b>IH</b> - Induction Hob     | <b>W</b> - Washer              |
| <b>GH</b> - Gas Hob           | <b>D</b> - Dryer               |
| <b>WM</b> - Washer cum Dryer  | <b>DB</b> - Distribution Board |
| <b>SO</b> - Combi Steam Oven  | <b>SC</b> - Shoe Cabinet       |
| <b>CO</b> - Convectional Oven |                                |



All plans are subjected to amendents as may be approved by the relevant authorities. Floor areas are approximate measurements and are subjected to final survey.  
\* Balconies/PES are not to be enclosed except with a balcony screen which has been approved and complies with the Competent Authority's guidelines.  
For an illustration of the approved balcony screen, please refer to this brochure

2-BEDROOM

Type B1

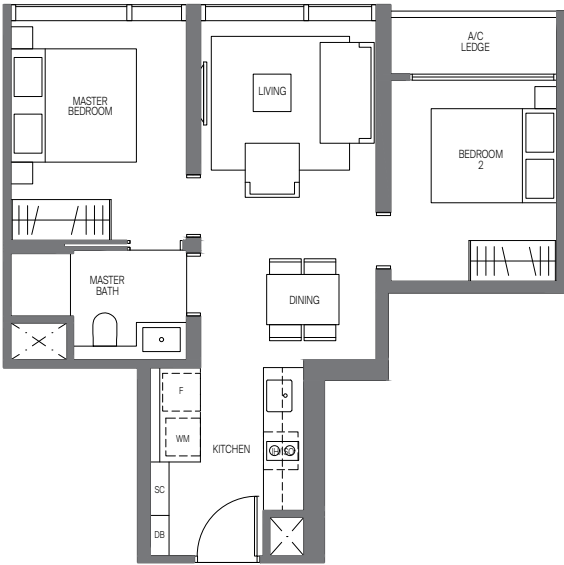
55 sq m | 592 sq ft  
INCLUSIVE OF 3 SQM AC LEDGE

Tower 16  
UNIT  
#03-03 to #29-03

Type B1-R

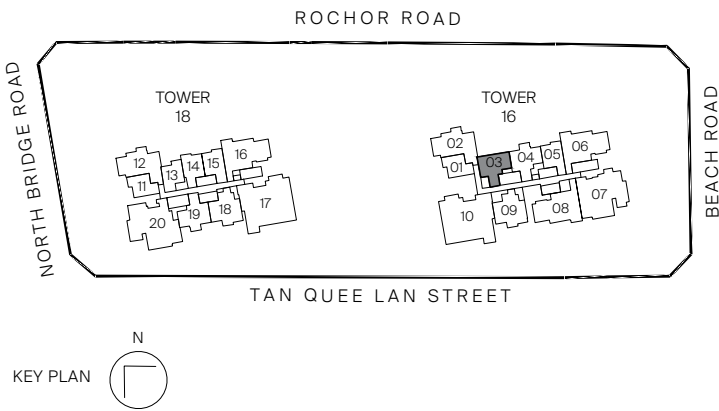
55 sq m | 592 sq ft  
INCLUSIVE OF 3 SQM AC LEDGE

Tower 16  
UNIT  
#30-03



Legend (where applicable)

- |                               |                                |
|-------------------------------|--------------------------------|
| <b>F</b> - Fridge             | <b>WCH</b> - Wine Chiller      |
| <b>IH</b> - Induction Hob     | <b>W</b> - Washer              |
| <b>GH</b> - Gas Hob           | <b>D</b> - Dryer               |
| <b>WM</b> - Washer cum Dryer  | <b>DB</b> - Distribution Board |
| <b>SO</b> - Combi Steam Oven  | <b>SC</b> - Shoe Cabinet       |
| <b>CO</b> - Convectional Oven |                                |



All plans are subjected to amendents as may be approved by the relevant authorities. Floor areas are approximate measurements and are subjected to final survey.

2-BEDROOM

Type B2-G

59 sq m | 635 sq ft  
INCLUSIVE OF 5 SQM PES & 3 SQM AC LEDGE

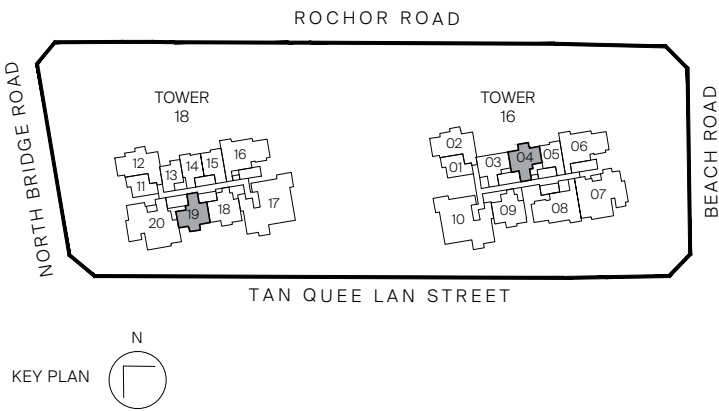
Tower 16  
UNIT  
#03-04

Tower 18  
UNIT  
#03-19



Legend (where applicable)

- |                               |                                |
|-------------------------------|--------------------------------|
| <b>F</b> - Fridge             | <b>WCH</b> - Wine Chiller      |
| <b>IH</b> - Induction Hob     | <b>W</b> - Washer              |
| <b>GH</b> - Gas Hob           | <b>D</b> - Dryer               |
| <b>WM</b> - Washer cum Dryer  | <b>DB</b> - Distribution Board |
| <b>SO</b> - Combi Steam Oven  | <b>SC</b> - Shoe Cabinet       |
| <b>CO</b> - Convectional Oven |                                |



All plans are subjected to amendents as may be approved by the relevant authorities. Floor areas are approximate measurements and are subjected to final survey.  
\* Balconies/PES are not to be enclosed except with a balcony screen which has been approved and complies with the Competent Authority's guidelines.  
For an illustration of the approved balcony screen, please refer to this brochure

2-BEDROOM

Type B2

59 sq m | 635 sq ft  
INCLUSIVE OF 5 SQM BALCONY & 3 SQM AC LEDGE

Tower 16  
UNIT  
#04-04 to #29-04

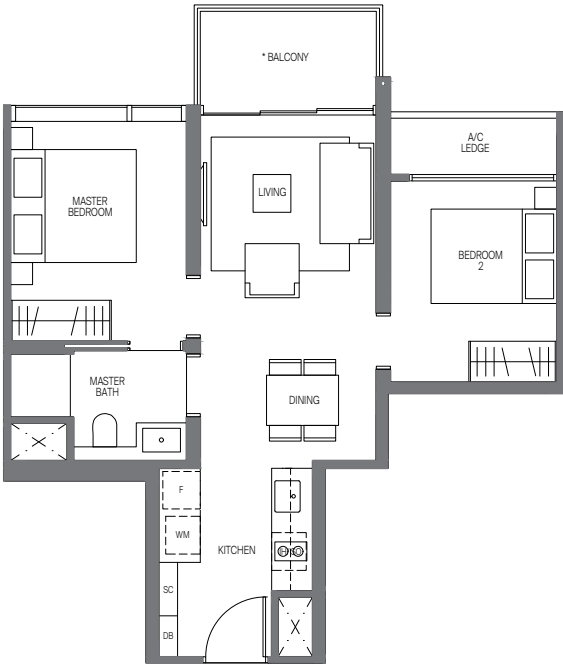
Tower 18  
UNIT  
#04-19 to #29-19

Type B2-R

59 sq m | 635 sq ft  
INCLUSIVE OF 5 SQM BALCONY & 3 SQM AC LEDGE

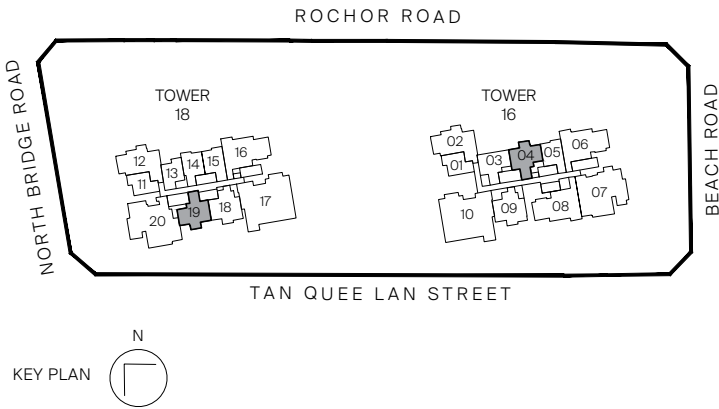
Tower 16  
UNIT  
#30-04

Tower 18  
UNIT  
#30-19



Legend (where applicable)

- |                               |                                |
|-------------------------------|--------------------------------|
| <b>F</b> - Fridge             | <b>WCH</b> - Wine Chiller      |
| <b>IH</b> - Induction Hob     | <b>W</b> - Washer              |
| <b>GH</b> - Gas Hob           | <b>D</b> - Dryer               |
| <b>WM</b> - Washer cum Dryer  | <b>DB</b> - Distribution Board |
| <b>SO</b> - Combi Steam Oven  | <b>SC</b> - Shoe Cabinet       |
| <b>CO</b> - Convectional Oven |                                |



All plans are subjected to amendents as may be approved by the relevant authorities. Floor areas are approximate measurements and are subjected to final survey.  
\* Balconies/PES are not to be enclosed except with a balcony screen which has been approved and complies with the Competent Authority's guidelines.  
For an illustration of the approved balcony screen, please refer to this brochure

2-BEDROOM

Type B3-G

67 sq m | 721 sq ft  
INCLUSIVE OF 5 SQM PES & 3 SQM AC LEDGE

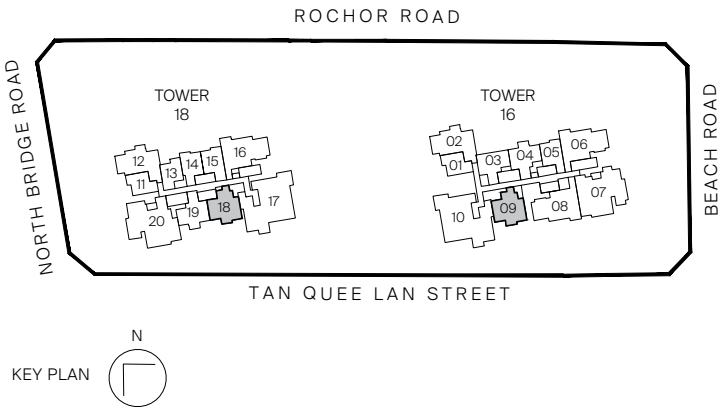
Tower 16  
UNIT  
#03-09

Tower 18  
UNIT  
#03-18



Legend (where applicable)

- |                               |                                |
|-------------------------------|--------------------------------|
| <b>F</b> - Fridge             | <b>WCH</b> - Wine Chiller      |
| <b>IH</b> - Induction Hob     | <b>W</b> - Washer              |
| <b>GH</b> - Gas Hob           | <b>D</b> - Dryer               |
| <b>WM</b> - Washer cum Dryer  | <b>DB</b> - Distribution Board |
| <b>SO</b> - Combi Steam Oven  | <b>SC</b> - Shoe Cabinet       |
| <b>CO</b> - Convectional Oven |                                |



All plans are subjected to amendents as may be approved by the relevant authorities. Floor areas are approximate measurements and are subjected to final survey.  
\* Balconies/PES are not to be enclosed except with a balcony screen which has been approved and complies with the Competent Authority's guidelines.  
For an illustration of the approved balcony screen, please refer to this brochure

2-BEDROOM

Type B3

67 sq m | 721 sq ft  
INCLUSIVE OF 5 SQM BALCONY & 3 SQM AC LEDGE

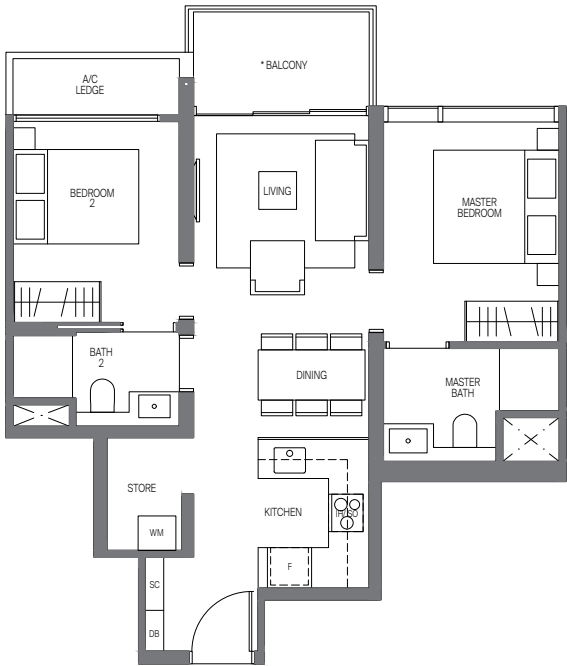
Tower 16  
UNIT  
#04-09 to #29-09

Tower 18  
UNIT  
#04-18 to #29-18

Type B3-R

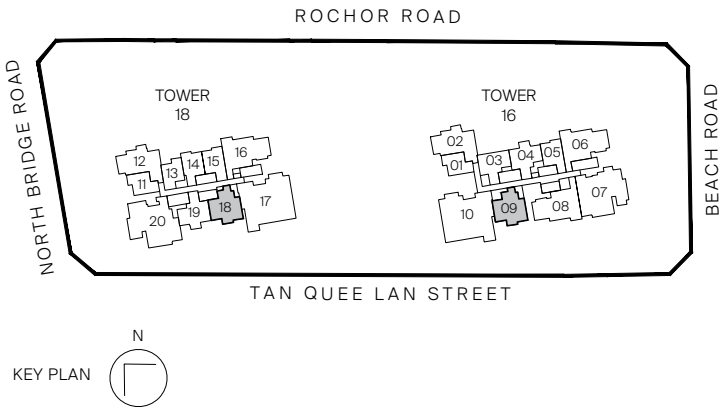
67 sq m | 721 sq ft  
INCLUSIVE OF 5 SQM BALCONY & 3 SQM AC LEDGE

Tower 16  
UNIT  
#30-09



Legend (where applicable)

- |                               |                                |
|-------------------------------|--------------------------------|
| <b>F</b> - Fridge             | <b>WCH</b> - Wine Chiller      |
| <b>IH</b> - Induction Hob     | <b>W</b> - Washer              |
| <b>GH</b> - Gas Hob           | <b>D</b> - Dryer               |
| <b>WM</b> - Washer cum Dryer  | <b>DB</b> - Distribution Board |
| <b>SO</b> - Combi Steam Oven  | <b>SC</b> - Shoe Cabinet       |
| <b>CO</b> - Convectional Oven |                                |



All plans are subjected to amendents as may be approved by the relevant authorities. Floor areas are approximate measurements and are subjected to final survey.  
\* Balconies/PES are not to be enclosed except with a balcony screen which has been approved and complies with the Competent Authority's guidelines.  
For an illustration of the approved balcony screen, please refer to this brochure

3-BEDROOM

Type C1

84 sq m | 904 sq ft  
INCLUSIVE OF 7 SQM AC LEDGE

Tower 16  
UNIT  
#03-02 to #29-02

Tower 18  
UNIT  
#03-12 to #29-12

Type C1-R

84 sq m | 904 sq ft  
INCLUSIVE OF 7 SQM AC LEDGE

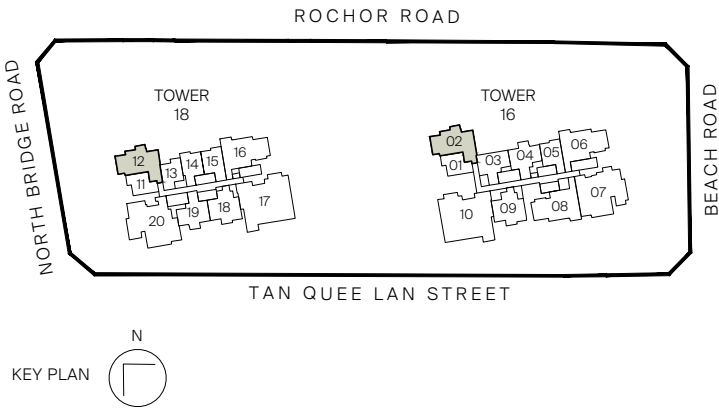
Tower 16  
UNIT  
#30-02

Tower 18  
UNIT  
#30-12



Legend (where applicable)

- |                               |                                |
|-------------------------------|--------------------------------|
| <b>F</b> - Fridge             | <b>WCH</b> - Wine Chiller      |
| <b>IH</b> - Induction Hob     | <b>W</b> - Washer              |
| <b>GH</b> - Gas Hob           | <b>D</b> - Dryer               |
| <b>WM</b> - Washer cum Dryer  | <b>DB</b> - Distribution Board |
| <b>SO</b> - Combi Steam Oven  | <b>SC</b> - Shoe Cabinet       |
| <b>CO</b> - Convectional Oven |                                |



All plans are subjected to amendents as may be approved by the relevant authorities. Floor areas are approximate measurements and are subjected to final survey.



### 3 BEDROOM





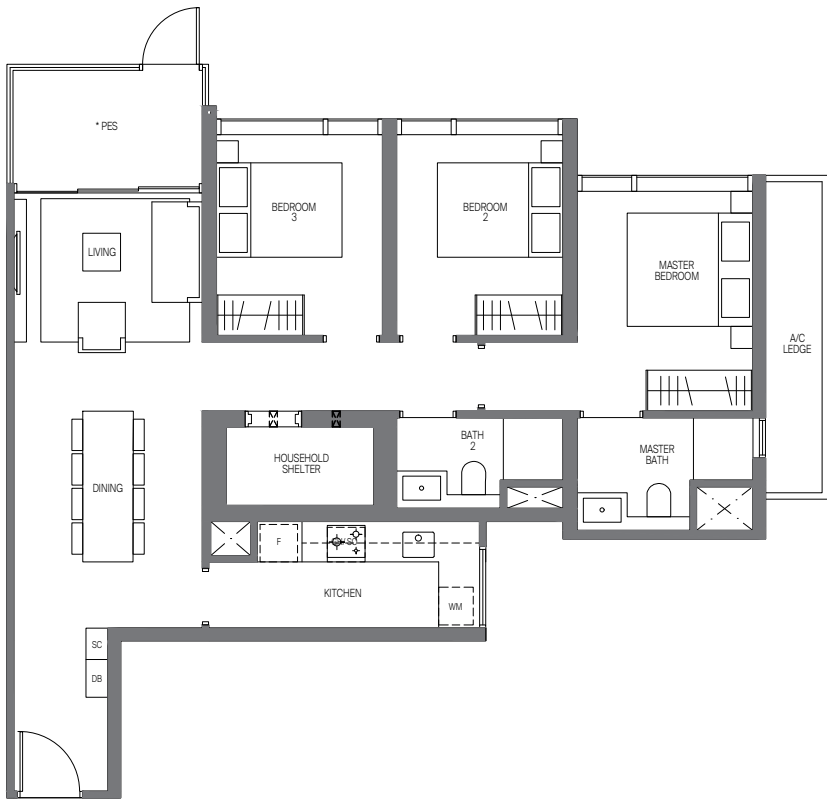
3-BEDROOM

Type C2-G

99 sq m | 1066 sq ft  
INCLUSIVE OF 6 SQM PES & 5 SQM AC LEDGE

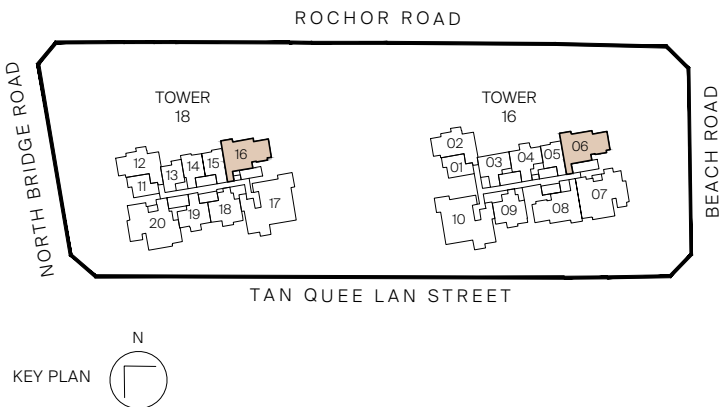
Tower 16  
UNIT  
#03-06

Tower 18  
UNIT  
#03-16



Legend (where applicable)

- |                               |                                |
|-------------------------------|--------------------------------|
| <b>F</b> - Fridge             | <b>WCH</b> - Wine Chiller      |
| <b>IH</b> - Induction Hob     | <b>W</b> - Washer              |
| <b>GH</b> - Gas Hob           | <b>D</b> - Dryer               |
| <b>WM</b> - Washer cum Dryer  | <b>DB</b> - Distribution Board |
| <b>SO</b> - Combi Steam Oven  | <b>SC</b> - Shoe Cabinet       |
| <b>CO</b> - Convectional Oven |                                |



All plans are subjected to amendents as may be approved by the relevant authorities. Floor areas are approximate measurements and are subjected to final survey.  
\* Balconies/PES are not to be enclosed except with a balcony screen which has been approved and complies with the Competent Authority's guidelines.  
For an illustration of the approved balcony screen, please refer to this brochure

3-BEDROOM

Type C2

99 sq m | 1066 sq ft  
INCLUSIVE OF 6 SQM BALCONY & 5 SQM AC LEDGE

Tower 16  
UNIT  
#04-06 to #29-06

Tower 18  
UNIT  
#04-16 to #29-16

Type C2-R

99 sq m | 1066 sq ft  
INCLUSIVE OF 6 SQM BALCONY & 5 SQM AC LEDGE

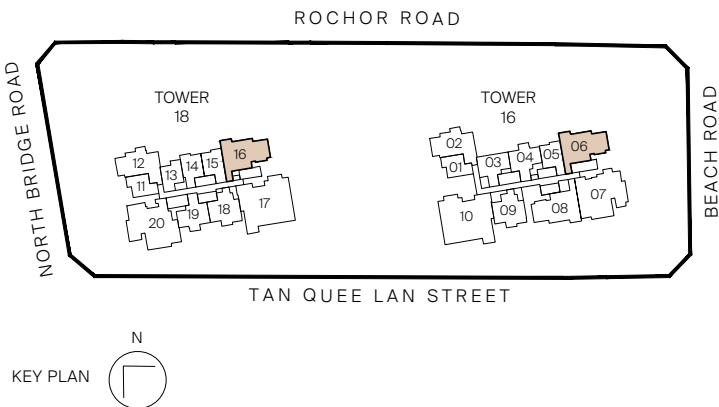
Tower 16  
UNIT  
#30-06

Tower 18  
UNIT  
#30-16



Legend (where applicable)

- |                               |                                |
|-------------------------------|--------------------------------|
| <b>F</b> - Fridge             | <b>WCH</b> - Wine Chiller      |
| <b>IH</b> - Induction Hob     | <b>W</b> - Washer              |
| <b>GH</b> - Gas Hob           | <b>D</b> - Dryer               |
| <b>WM</b> - Washer cum Dryer  | <b>DB</b> - Distribution Board |
| <b>SO</b> - Combi Steam Oven  | <b>SC</b> - Shoe Cabinet       |
| <b>CO</b> - Convectional Oven |                                |



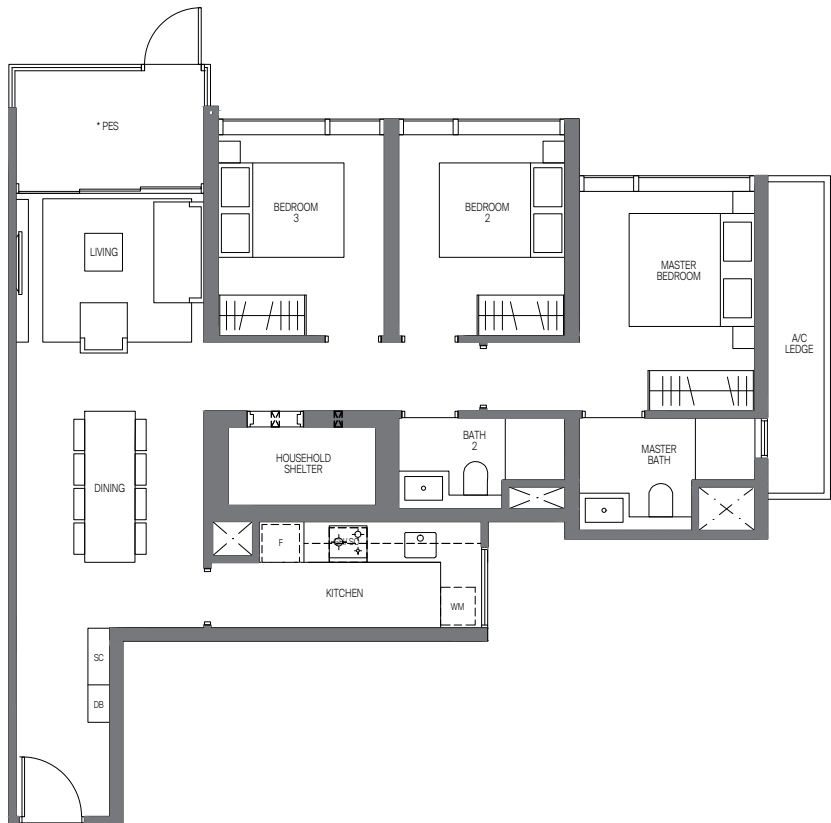
All plans are subjected to amendents as may be approved by the relevant authorities. Floor areas are approximate measurements and are subjected to final survey.  
\* Balconies/PES are not to be enclosed except with a balcony screen which has been approved and complies with the Competent Authority's guidelines.  
For an illustration of the approved balcony screen, please refer to this brochure

3-BEDROOM

Type C3-G

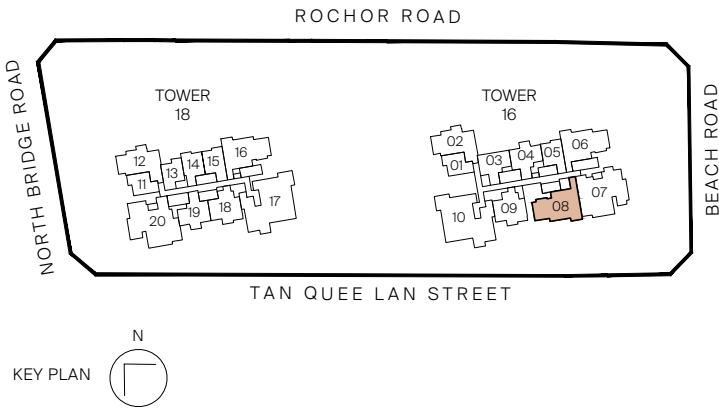
99 sq m | 1066 sq ft  
INCLUSIVE OF 6 SQM PES & 5 SQM AC LEDGE

Tower 16  
UNIT  
#03-08



Legend (where applicable)

- |                               |                                |
|-------------------------------|--------------------------------|
| <b>F</b> - Fridge             | <b>WCH</b> - Wine Chiller      |
| <b>IH</b> - Induction Hob     | <b>W</b> - Washer              |
| <b>GH</b> - Gas Hob           | <b>D</b> - Dryer               |
| <b>WM</b> - Washer cum Dryer  | <b>DB</b> - Distribution Board |
| <b>SO</b> - Combi Steam Oven  | <b>SC</b> - Shoe Cabinet       |
| <b>CO</b> - Convectional Oven |                                |



All plans are subjected to amendments as may be approved by the relevant authorities. Floor areas are approximate measurements and are subjected to final survey.  
\* Balconies/PES are not to be enclosed except with a balcony screen which has been approved and complies with the Competent Authority's guidelines.  
For an illustration of the approved balcony screen, please refer to this brochure

3-BEDROOM

Type C3

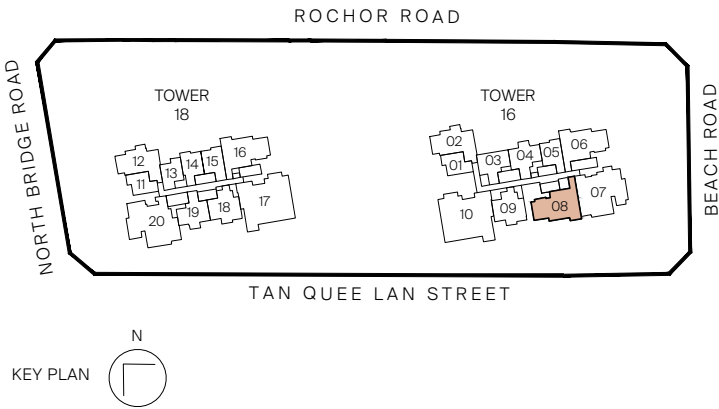
99 sq m | 1066 sq ft  
INCLUSIVE OF 6 SQM BALCONY & 5 SQM AC LEDGE

Tower 16  
UNIT  
#04-08 to #29-08



Legend (where applicable)

- |                               |                                |
|-------------------------------|--------------------------------|
| <b>F</b> - Fridge             | <b>WCH</b> - Wine Chiller      |
| <b>IH</b> - Induction Hob     | <b>W</b> - Washer              |
| <b>GH</b> - Gas Hob           | <b>D</b> - Dryer               |
| <b>WM</b> - Washer cum Dryer  | <b>DB</b> - Distribution Board |
| <b>SO</b> - Combi Steam Oven  | <b>SC</b> - Shoe Cabinet       |
| <b>CO</b> - Convectional Oven |                                |



All plans are subjected to amendments as may be approved by the relevant authorities. Floor areas are approximate measurements and are subjected to final survey.  
\* Balconies/PES are not to be enclosed except with a balcony screen which has been approved and complies with the Competent Authority's guidelines.  
For an illustration of the approved balcony screen, please refer to this brochure



4 BEDROOM



Artist's Impression



4-BEDROOM

Type D1-G (PL)

133 sq m | 1432 sq ft

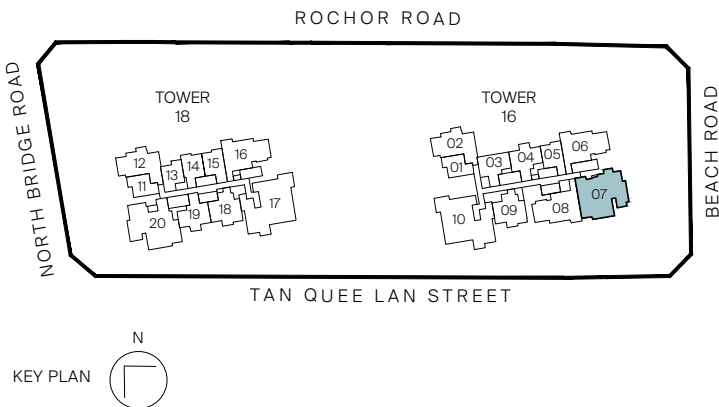
INCLUSIVE OF 13 SQM PES & 7 SQM AC LEDGE

Tower 16  
UNIT  
#03-07



Legend (where applicable)

- |                               |                                |
|-------------------------------|--------------------------------|
| <b>F</b> - Fridge             | <b>WCH</b> - Wine Chiller      |
| <b>IH</b> - Induction Hob     | <b>W</b> - Washer              |
| <b>GH</b> - Gas Hob           | <b>D</b> - Dryer               |
| <b>WM</b> - Washer cum Dryer  | <b>DB</b> - Distribution Board |
| <b>SO</b> - Steam Oven        | <b>SC</b> - Shoe Cabinet       |
| <b>CO</b> - Convectional Oven |                                |



All plans are subjected to amendments as may be approved by the relevant authorities. Floor areas are approximate measurements and are subjected to final survey.  
\* Balconies/PES are not to be enclosed except with a balcony screen which has been approved and complies with the Competent Authority's guidelines.  
For an illustration of the approved balcony screen, please refer to this brochure

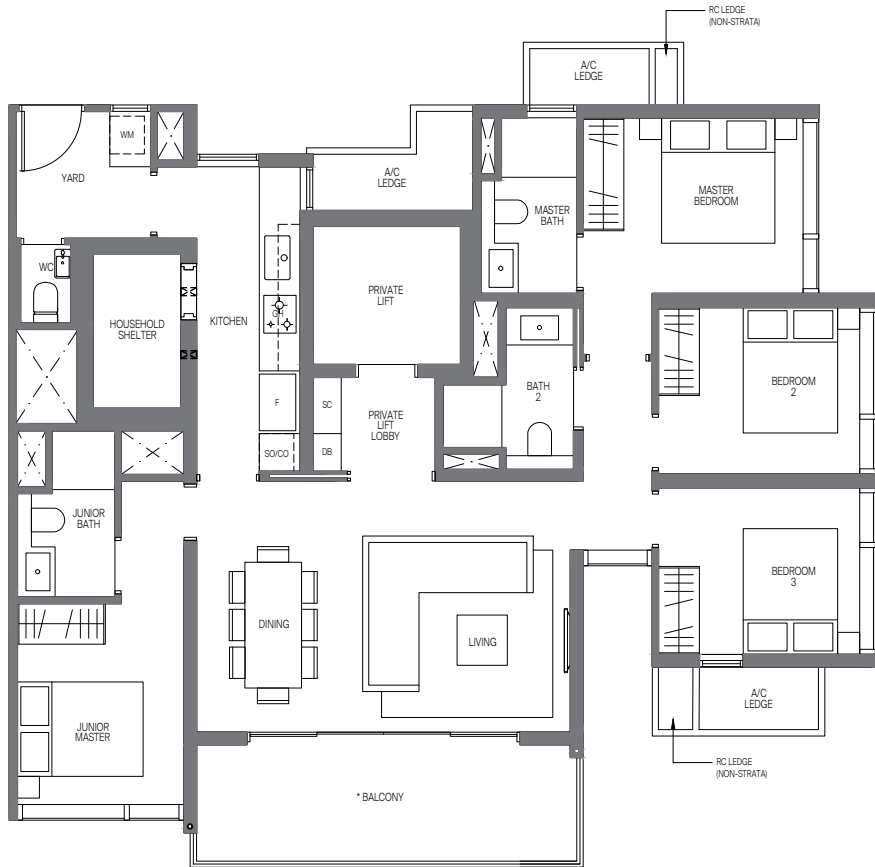
4-BEDROOM

Type D1 (PL)

134 sq m | 1442 sq ft

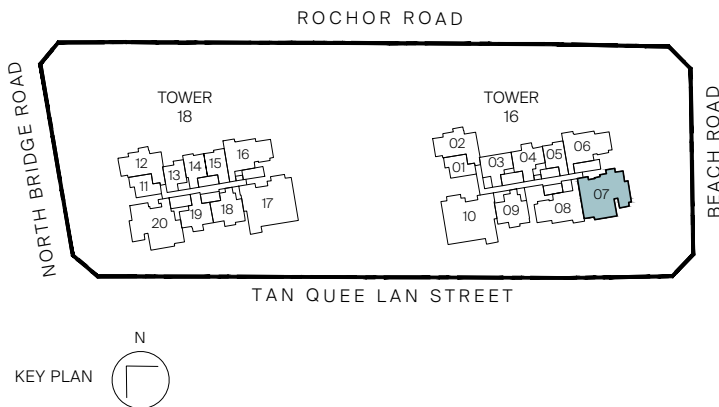
INCLUSIVE OF 13 SQM BALCONY & 8 SQM AC LEDGE

Tower 16  
UNIT  
#04-07 to #29-07



Legend (where applicable)

- |                               |                                |
|-------------------------------|--------------------------------|
| <b>F</b> - Fridge             | <b>WCH</b> - Wine Chiller      |
| <b>IH</b> - Induction Hob     | <b>W</b> - Washer              |
| <b>GH</b> - Gas Hob           | <b>D</b> - Dryer               |
| <b>WM</b> - Washer cum Dryer  | <b>DB</b> - Distribution Board |
| <b>SO</b> - Steam Oven        | <b>SC</b> - Shoe Cabinet       |
| <b>CO</b> - Convectional Oven |                                |



All plans are subjected to amendments as may be approved by the relevant authorities. Floor areas are approximate measurements and are subjected to final survey.  
\* Balconies/PES are not to be enclosed except with a balcony screen which has been approved and complies with the Competent Authority's guidelines.  
For an illustration of the approved balcony screen, please refer to this brochure



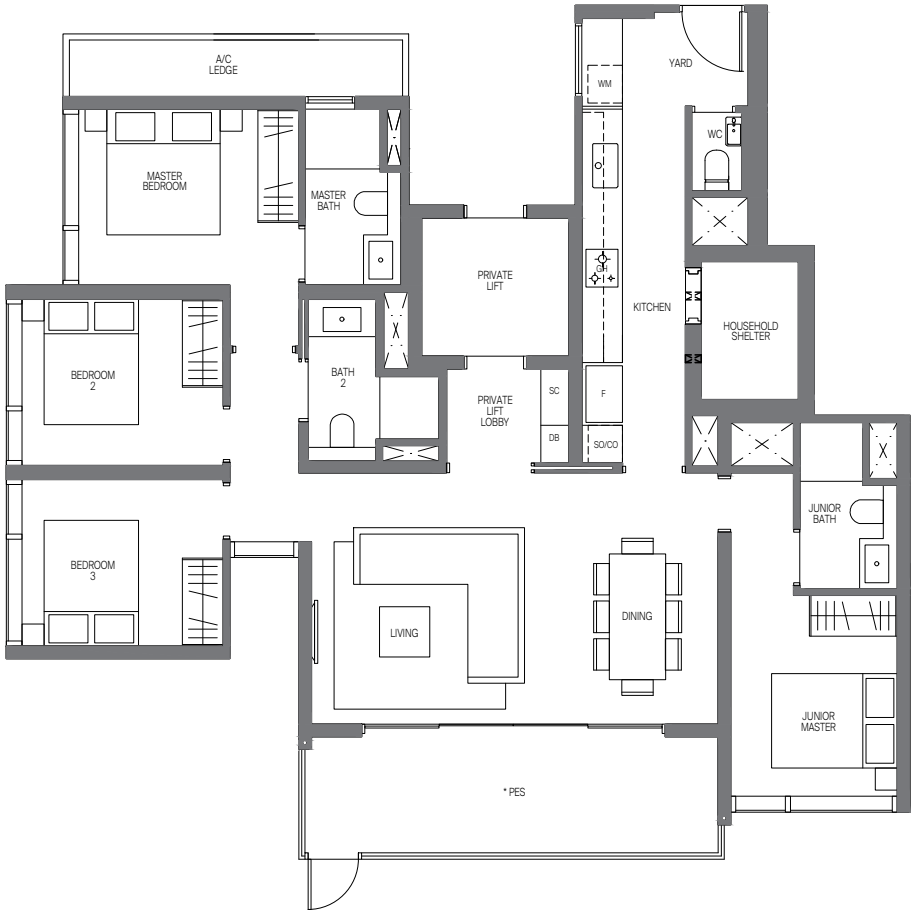
4-BEDROOM

Type D2-G (PL)

134 sq m | 1442 sq ft

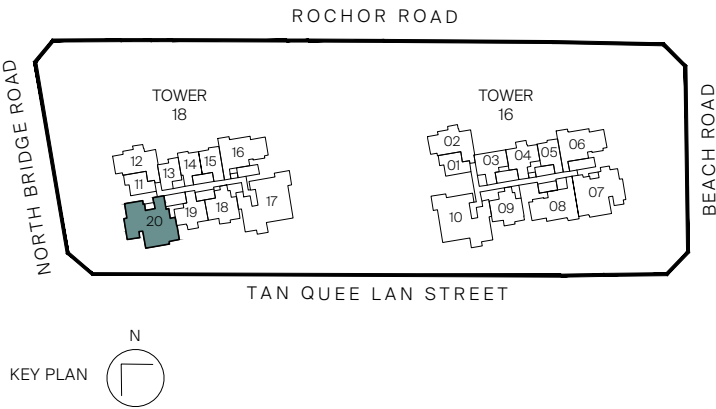
INCLUSIVE OF 14 SQM PES & 6 SQM AC LEDGE

Tower 18  
UNIT  
#03-20



Legend (where applicable)

- |                               |                                |
|-------------------------------|--------------------------------|
| <b>F</b> - Fridge             | <b>WCH</b> - Wine Chiller      |
| <b>IH</b> - Induction Hob     | <b>W</b> - Washer              |
| <b>GH</b> - Gas Hob           | <b>D</b> - Dryer               |
| <b>WM</b> - Washer cum Dryer  | <b>DB</b> - Distribution Board |
| <b>SO</b> - Steam Oven        | <b>SC</b> - Shoe Cabinet       |
| <b>CO</b> - Convectional Oven |                                |



All plans are subjected to amendments as may be approved by the relevant authorities. Floor areas are approximate measurements and are subjected to final survey.  
\* Balconies/PES are not to be enclosed except with a balcony screen which has been approved and complies with the Competent Authority's guidelines.  
For an illustration of the approved balcony screen, please refer to this brochure

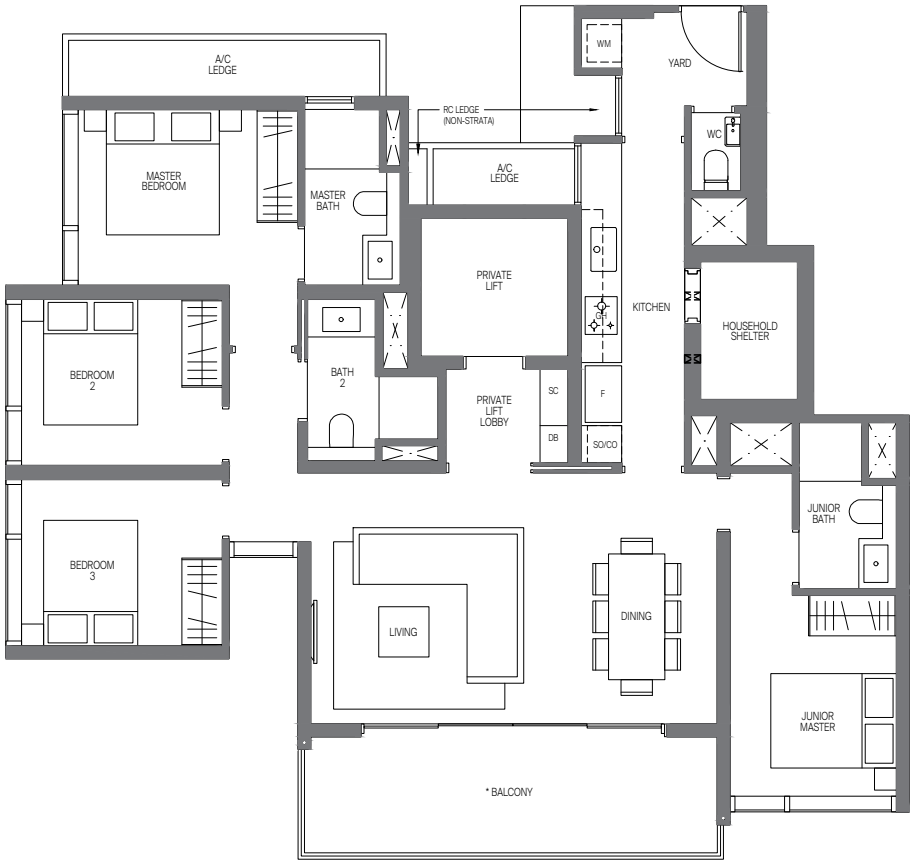
4-BEDROOM

Type D2 (PL)

136 sq m | 1464 sq ft

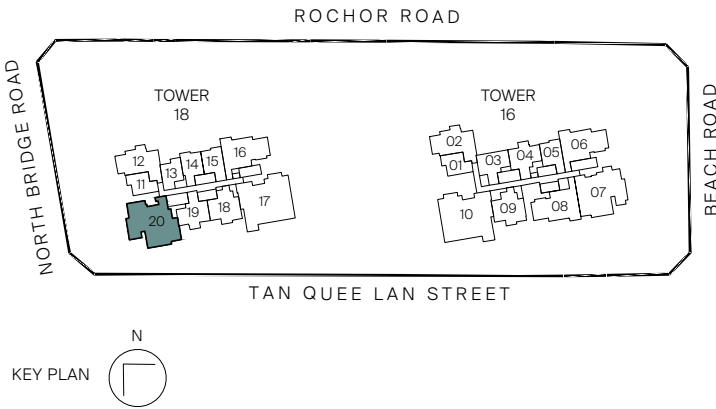
INCLUSIVE OF 14 SQM BALCONY & 8 SQM AC LEDGE

Tower 18  
UNIT  
#04-20 to #29-20



Legend (where applicable)

- |                               |                                |
|-------------------------------|--------------------------------|
| <b>F</b> - Fridge             | <b>WCH</b> - Wine Chiller      |
| <b>IH</b> - Induction Hob     | <b>W</b> - Washer              |
| <b>GH</b> - Gas Hob           | <b>D</b> - Dryer               |
| <b>WM</b> - Washer cum Dryer  | <b>DB</b> - Distribution Board |
| <b>SO</b> - Steam Oven        | <b>SC</b> - Shoe Cabinet       |
| <b>CO</b> - Convectional Oven |                                |



All plans are subjected to amendments as may be approved by the relevant authorities. Floor areas are approximate measurements and are subjected to final survey.  
\* Balconies/PES are not to be enclosed except with a balcony screen which has been approved and complies with the Competent Authority's guidelines.  
For an illustration of the approved balcony screen, please refer to this brochure

4-BEDROOM PREMIUM

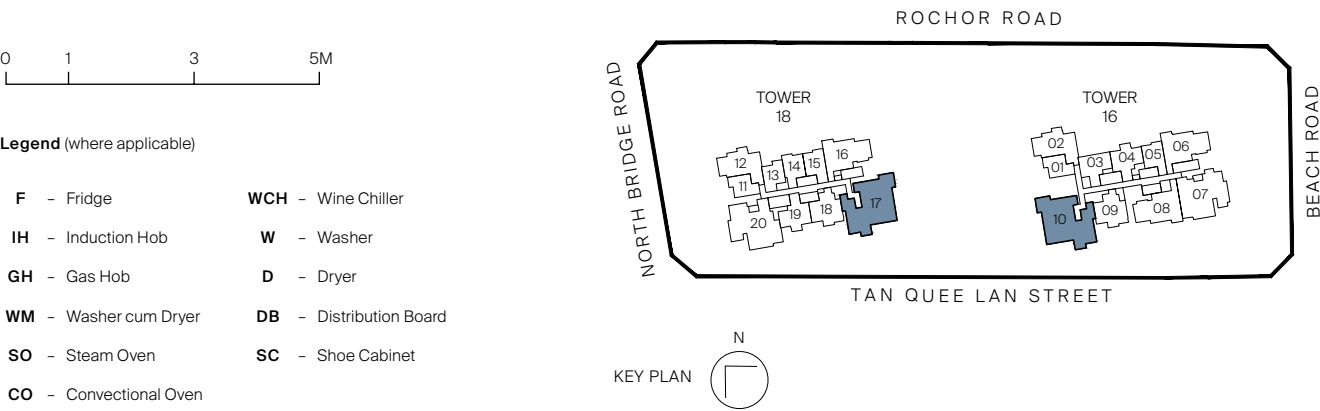
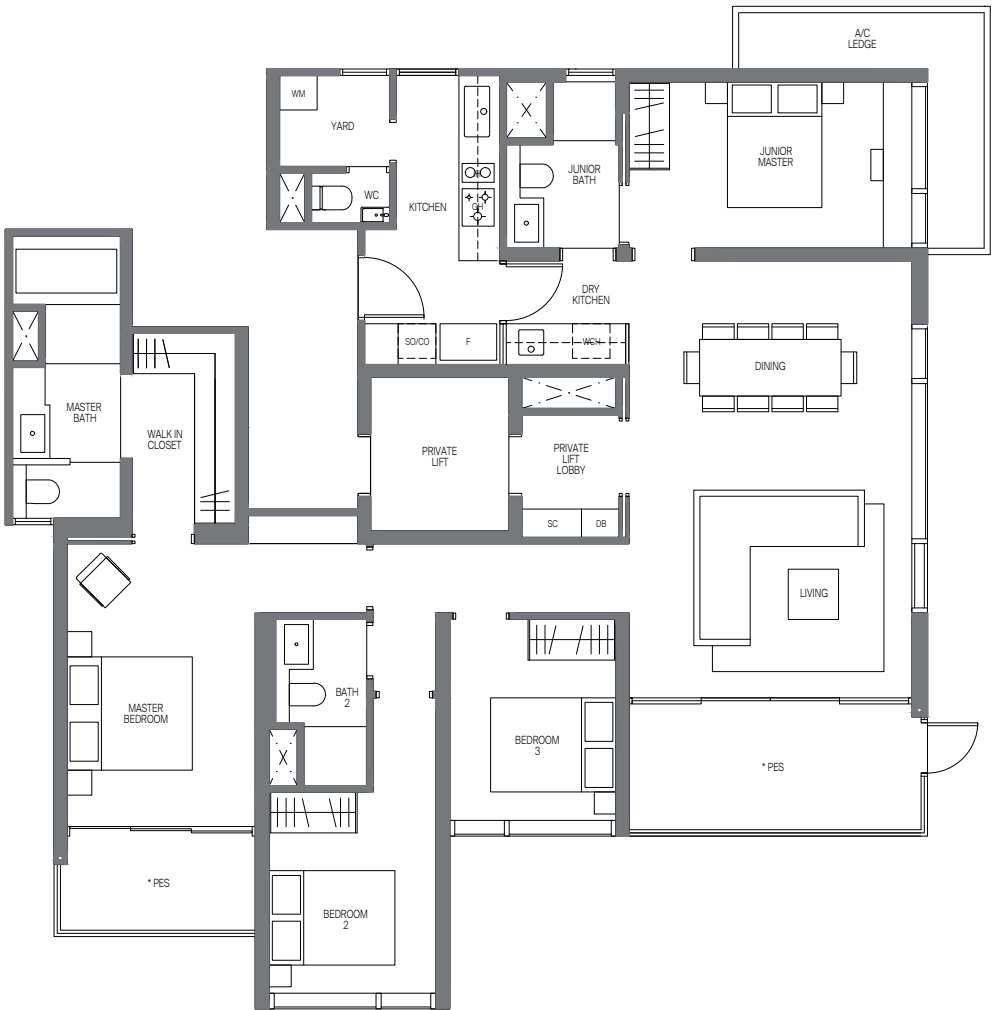
Type D3P-G (PL)

161 sq m | 1733 sq ft  
INCLUSIVE OF 16 SQM PES & 7 SQM AC LEDGE

Tower 16  
UNIT  
#03-10\*

Tower 18  
UNIT  
#03-17

\* MIRROR IMAGE



All plans are subjected to amendments as may be approved by the relevant authorities. Floor areas are approximate measurements and are subjected to final survey.  
\* Balconies/PES are not to be enclosed except with a balcony screen which has been approved and complies with the Competent Authority's guidelines.  
For an illustration of the approved balcony screen, please refer to this brochure

4-BEDROOM PREMIUM

Type D3P (PL)

168 sq m | 1808 sq ft  
INCLUSIVE OF 16 SQM BALCONY & 8 SQM AC LEDGE

Tower 16  
UNIT  
#04-10\* to #29-10\*

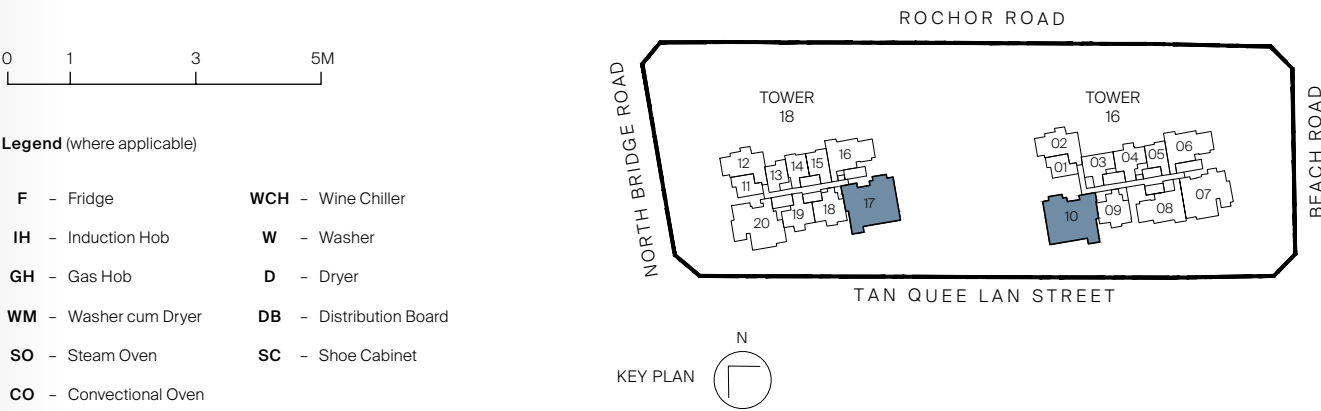
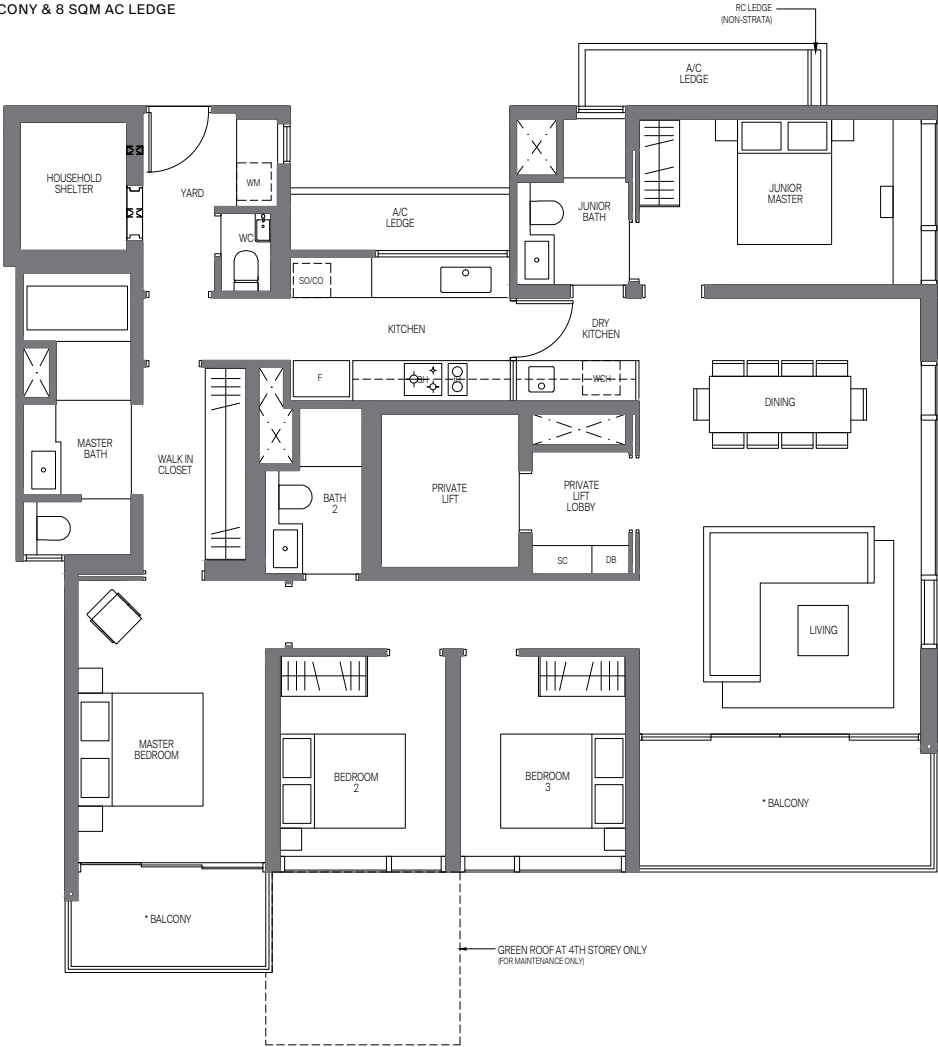
Tower 18  
UNIT  
#04-17 to #29-17

Type D3P-R (PL)

168 sq m | 1808 sq ft  
INCLUSIVE OF 16 SQM BALCONY & 8 SQM AC LEDGE

Tower 16  
UNIT  
#30-10\*

\* MIRROR IMAGE



All plans are subjected to amendments as may be approved by the relevant authorities. Floor areas are approximate measurements and are subjected to final survey.  
\* Balconies/PES are not to be enclosed except with a balcony screen which has been approved and complies with the Competent Authority's guidelines.  
For an illustration of the approved balcony screen, please refer to this brochure





## The Penthouse

With only two penthouses, each with unrivalled, panoramic views from the 30th storey of both residential towers, these are the crown jewels of Midtown Modern. Given the rarity of penthouses in the CBD, these prized residences are highly sought-after, offering their privileged owners a truly distinctive and impeccable quality of life bar none.



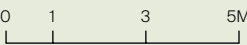
4-BEDROOM PENTHOUSE

Type PH 1 (PL)

304 sq m | 3272 sq ft

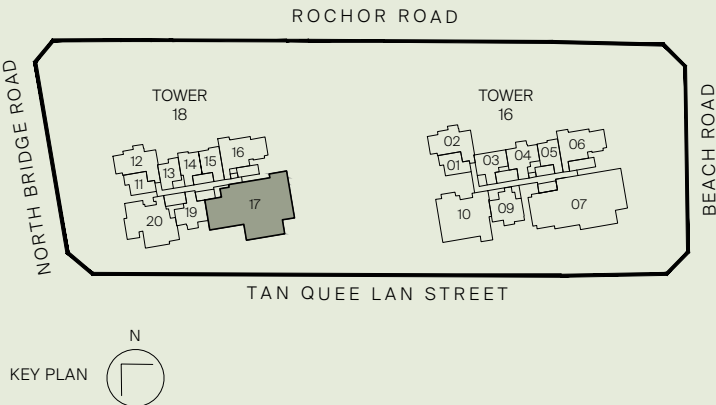
INCLUSIVE OF 28 SQM BALCONY & 8 SQM AC LEDGE

Tower 18  
UNIT  
#30-17



Legend (where applicable)

- |                               |                                |
|-------------------------------|--------------------------------|
| <b>F</b> - Fridge             | <b>VD</b> - Vacuum Drawer      |
| <b>IH</b> - Induction Hob     | <b>WD</b> - Warmer Drawer      |
| <b>GH</b> - Gas Hob           | <b>DW</b> - Dishwasher         |
| <b>SO</b> - Steam Oven        | <b>W</b> - Washer              |
| <b>CSO</b> - Combi Steam Oven | <b>D</b> - Dryer               |
| <b>CO</b> - Convectional Oven | <b>DB</b> - Distribution Board |
| <b>WCH</b> - Wine Chiller     | <b>SC</b> - Shoe Cabinet       |



All plans are subjected to amendments as may be approved by the relevant authorities. Floor areas are approximate measurements and are subjected to final survey.  
\* Balconies/PES are not to be enclosed except with a balcony screen which has been approved and complies with the Competent Authority's guidelines.  
For an illustration of the approved balcony screen, please refer to this brochure

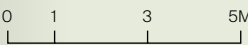
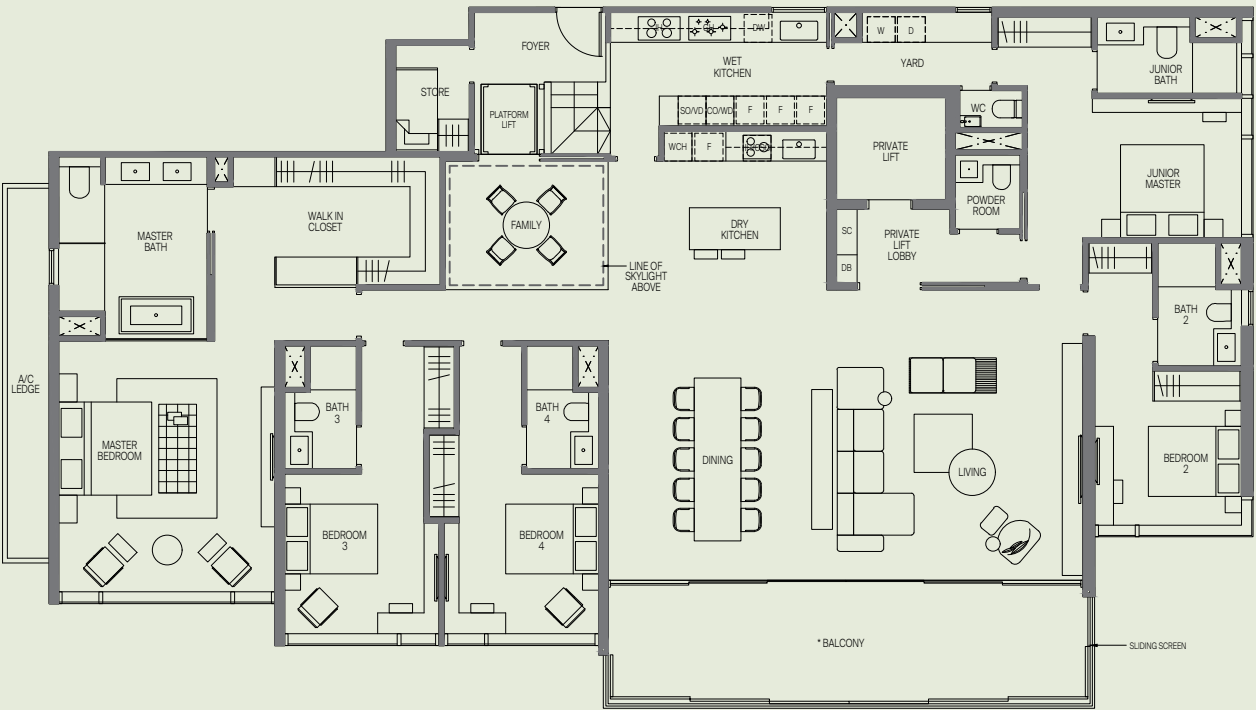
5-BEDROOM PENTHOUSE

Type PH 2 (PL)

327 sq m | 3520 sq ft

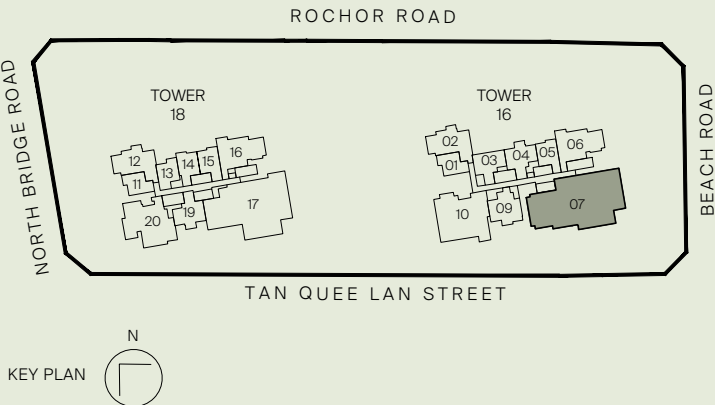
INCLUSIVE OF 28 SQM BALCONY & 9 SQM AC LEDGE

Tower 16  
UNIT  
#30-07



Legend (where applicable)

- |                               |                                |
|-------------------------------|--------------------------------|
| <b>F</b> - Fridge             | <b>VD</b> - Vacuum Drawer      |
| <b>IH</b> - Induction Hob     | <b>WD</b> - Warmer Drawer      |
| <b>GH</b> - Gas Hob           | <b>DW</b> - Dishwasher         |
| <b>SO</b> - Steam Oven        | <b>W</b> - Washer              |
| <b>CSO</b> - Combi Steam Oven | <b>D</b> - Dryer               |
| <b>CO</b> - Convectional Oven | <b>DB</b> - Distribution Board |
| <b>WCH</b> - Wine Chiller     | <b>SC</b> - Shoe Cabinet       |



All plans are subjected to amendments as may be approved by the relevant authorities. Floor areas are approximate measurements and are subjected to final survey.  
\* Balconies/PES are not to be enclosed except with a balcony screen which has been approved and complies with the Competent Authority's guidelines.  
For an illustration of the approved balcony screen, please refer to this brochure